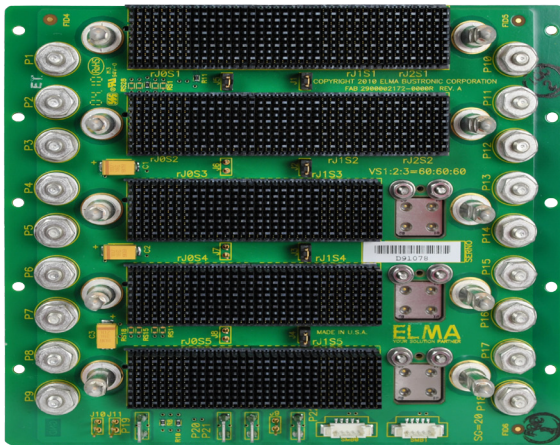


3U 5-Slot OpenVPX Backplane BKP3-DIS05-15.3.2.-1



Front View



Rear View

Description

Designed to meet VITA 65, the 5 slot OpenVPX backplane features a data plane with a mesh using four FP's on each slot. Slots 3, 4 and 5 have a 4 position VITA 67.1 connector in the lower half of J2.

Features

- Compliant to the VITA 65 Standard.
- Uses the rugged 3U-160 Eurocard form factor
- High-speed MultiGig connector
- Provides built in ESD ground protection in every slot.

Board Specifications

- 14 layers
- 1 oz. copper power and ground
- .12" thick PCB, FR-4 or equivalent

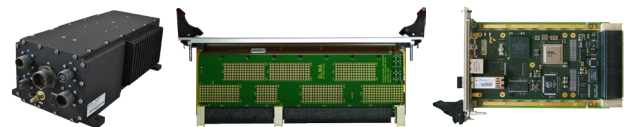
Mechanical Specifications

- 5.067" high X 5.232" tall

Related Products and Applications

Highly integrated applications such as:

- Integrated display processing, mission management and navigational control for avionics systems
- Industrial monitoring, medical equipment, and night-vision systems requiring enhanced graphics capabilities
- Shipboard systems for target tracking and high definition displays
- Applications requiring a mix of I/O options, high compute density and enhanced graphics



- Load boards convection or conduction cooled
- Rear Transition Modules for I/O
- Intel & Freescale Single Board Computers
- Blade level networking boards (Ethernet, PCI Express)
- Rackmount, desktop, and ATR chassis platforms
- Ruggedization programs

VPX

3U 5-Slot OpenVPX Backplane BKP3-DIS05-15.3.2.-1

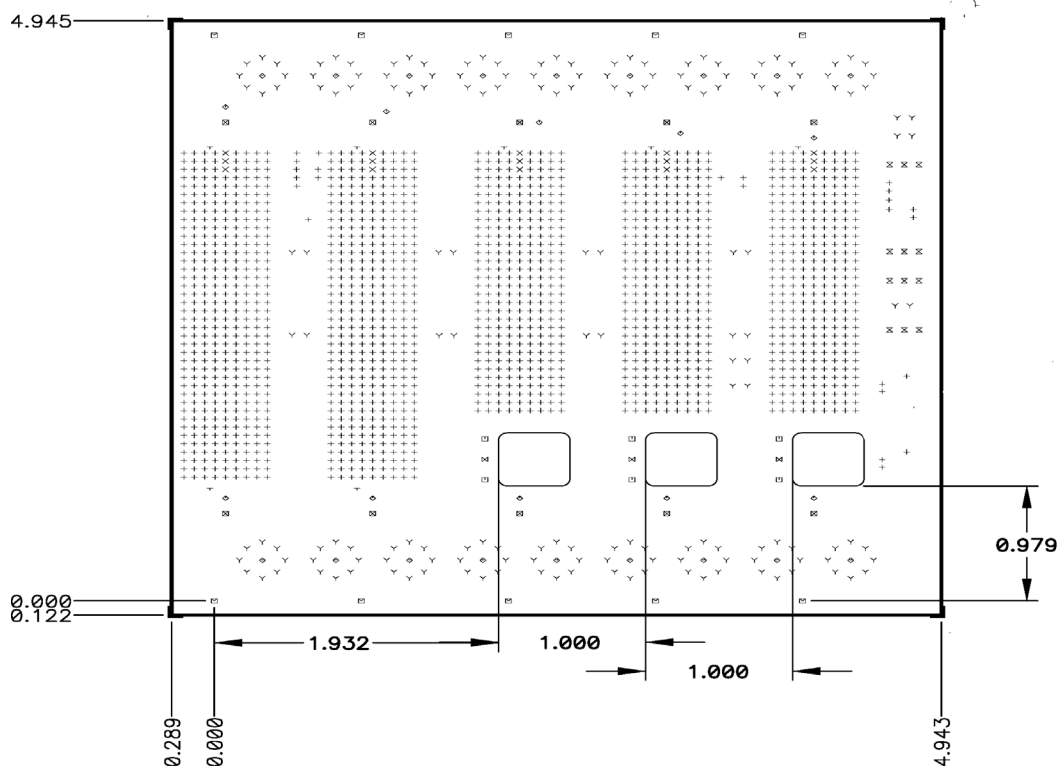


VPX



Backplanes

Line Drawing



Slot Profiles

Slot 1 and 2: SLT3-PAY-4F-14.4.4
Slots 3-5: SLT3-MSC-4F4R-14.6.2

Order Information

Height	Total Slots	Description	Profile Number	Part Number
3U	5	fat Pipe mesh data plane, Gbaud rate to 3.125	BKP3-DIS05-15.3.2-1	1OVX305DX1-1X11R