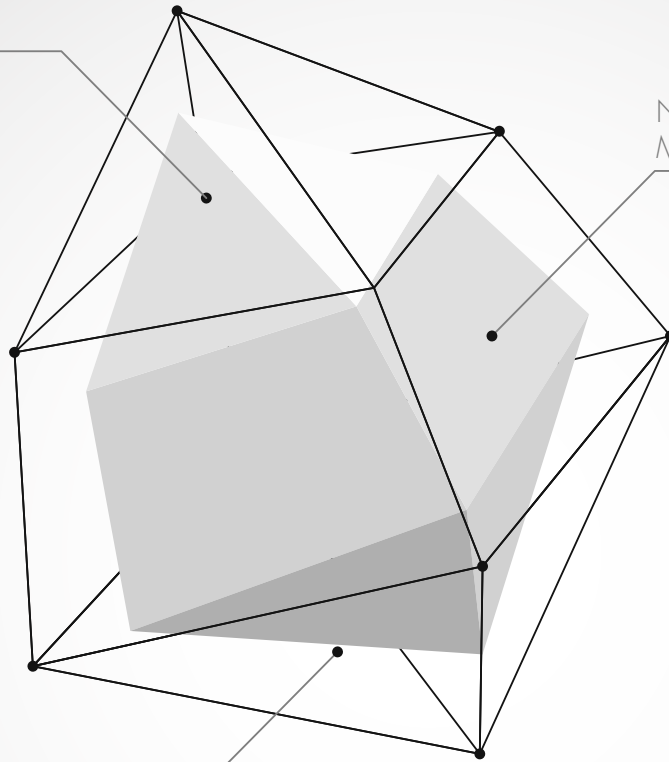


**01** INDIVIDUAL  
DESIGN

NO  
MOLD COSTS

**02**

**03** NO  
TOOLING



# Shapebox 22

PLASTIC ENCLOSURES

SYSTEM SOLUTIONS  
BACKPLANES  
ENCLOSURES  
ROTARY SWITCHES  
CABINETS

## PLASTIC ENCLOSURES - NO TOOLING REQUIRED

FOR SMALL AND MEDIUM SIZE QUANTITIES

Elma provides individual plastic enclosures with a tool free method where no tooling is required. This innovative manufacturing technique allows to avoid expensive moulding tools. Therefore the prototypes are available quickly and a timely start of series production is possible - all that at minimal costs. We fulfil your specific requirements: from project start right through to delivery.

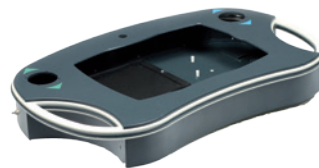
### Advantages and benefits:

- › No moulding and tooling costs
- › Development, design and engineering
- › Prototypes available within a short delivery time
- › Customized enclosures already in small quantities
- › EMC on request
- › From the initial prototype through to volume production
- › Adjustments usually without great expenses

### Typical applications:



Desktop enclosure



Control desk



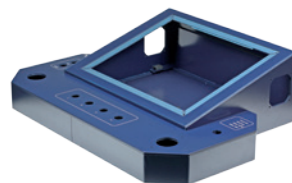
Wall enclosure



Instrument case



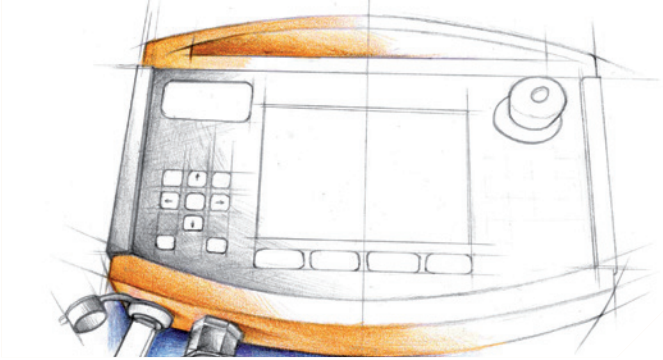
Monitor enclosure



Control unit housing

## SERVICES

## Design



Our experts develop your plastic enclosure according to your functional requirements and provide a 3D Step-File for review.

## Development &amp; Engineering



We develop the best possible technical solutions to make the product meet your expectations.

## Surface treatment



Standing out from the crowd, both in optics and in haptics:

- › Plastic sheets in many colours and widths as well as various surface finishes
- › Surface coatings for special environmental requirements
- › EMC-coating
- › Engravings
- › With screen printing, pad printing, hot-stamp printing
- › Surface flocking
- › Individual motives or your own company branding

## Assembly &amp; Testing



You decide, what we may do for you:

- › Great variety of components and accessories
- › Sub-assembly or module assembly
- › Strict quality controls
- › Individualised dispatch

**YOUR LOCAL SOLUTION PARTNER**