



# Stormwater Product Line Card







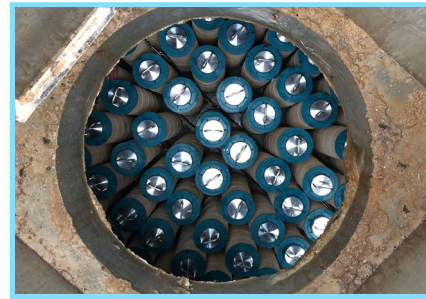
## STORAGE



## BIOFILTRATION



## SEPARATION



## FILTRATION



## TRASH CAPTURE



## SPECIALTY FILTERS

### STORAGE PRODUCTS

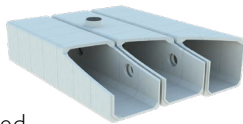
#### UrbanPond

UrbanPond's™ unique square tessellation assembly provides superior strength and material efficiency over traditional rectangular modules. Its high void percentages maximize stormwater volume and the robust precast form allows it to be buried deeper without the need for specialized backfill, increased wall thickness, or extra rebar reinforcement.



#### FastCast

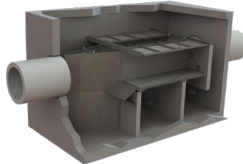
The FastCast™ stormwater storage system is a precast modular stormwater detention, retention, and infiltration system comprised of engineered, reinforced, and pregasketed concrete boxes joined together in near limitless configurations.



### SEPARATION PRODUCTS

#### DSBB Separator

The Debris Separating Baffle Box (DSBB) utilizes a non-clogging screen technology and hydrodynamic separation to capture pollutants, and then stores trash and debris in a dry state which minimizes nutrient leaching, bacterial growth, bad odors, and allows for easier maintenance.

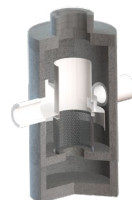


#### Notable Approvals

- California Water Resources Control Board, Full Capture
- NJCAT Verification & NJDEP Certification

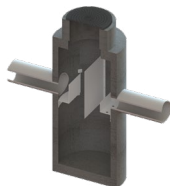
#### DSD Separator

The Deflective Screening Device (DSD) is a screening hydrodynamic separator. It utilizes a non-clogging screening design that has opposite facing openings from the flow direction of incoming water and ensures high treatment flow rates are maintained.



#### SciClone Separator

SciClone® is the first separator to offer efficient hydrodynamic separation whose design allows for high TSS removal and is widely considered the easiest separator to maintain in the industry.



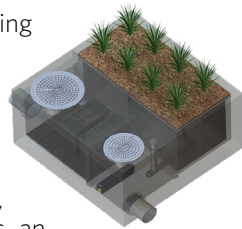
#### Notable Approvals

- NJCAT Verification & NJDEP Certification

### BIOFILTRATION PRODUCTS

#### Modular Wetlands Linear

Modular Wetlands® Linear (MWS Linear) represents a pioneering breakthrough in stormwater technology as the only biofiltration system to utilize patented horizontal flow, allowing for a smaller footprint and higher treatment capacity. Unlike most biofiltration products, the Modular Wetlands Linear offers an advanced pretreatment chamber that includes separation and pre-filter boxes.



#### Notable Approvals

- Washington Ecology TAPE/GULD Approval
- California Water Resources Control Board, Full Capture
- Texas TCEQ Approval
- Virginia DEQ Assignment
- Rhode Island DEM Approval
- Massachusetts Stormwater Evaluation Project
- Atlanta Regional Commission, Letter of Compliance

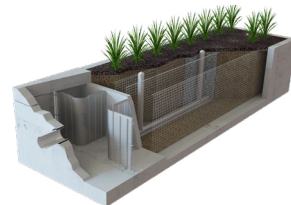
#### Modular Wetlands Fiberglass

The Modular Wetlands® Fiberglass (for downspout applications) is an adaptation of the Modular Wetlands® Linear and is designed as an above-ground planter box to treat roof runoff. The system is lightweight, available in various sizes, and easy to install without the use of heavy equipment. It offers a pretreatment tray to collect leaves and debris for easy removal.



#### WetlandMod

The WetlandMod® provides the right direction in stormwater bioretention/biofiltration treatment with up to a 50% smaller footprint than traditional bioretention solutions or biofilters. WetlandMod incorporates the use of locally approved bioretention media and is functionally equivalent to many bioretention systems.



This modular system provides the same treatment train concept as the industry leading Modular Wetlands Linear, combining screening, separation, and biofiltration with the capacity to reduce and control water volume in a more efficient way; when compared to traditional downward flow bioretention systems.

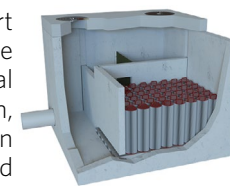
#### Notable Approvals

- Washington Ecology Functional Equivalency Approval

### FILTRATION PRODUCTS

#### Kraken Filter

The Kraken® Filter is a state-of-the-art system utilizing advanced membrane filtration, ensuring a high level of removal for not only TSS, but also metals, trash, nutrients, and hydrocarbons. The Kraken membrane filters provide high flow rates and over 170 sq.ft. of surface area. This much surface area allows it to operate at a loading rate of only 0.05 gpm/sq.ft. to ensure maximum performance and minimum maintenance. The Kraken Filter's low loading rate successfully overcomes high maintenance requirements and frequent clogging issues often found in other filter systems advertising high loading rates.



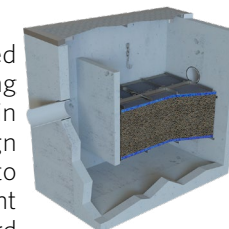
Each membrane filter is lightweight, washable, reusable, and more sustainable than typical granular-filled media cartridges. By eliminating the need to purchase new granular media and dispose of spent media, the Kraken Filter provides lower life cycle and maintenance costs.

#### Notable Approvals

- Washington Ecology TAPE/GULD Approval
- NJCAT Verification & NJDEP Certification

#### Water Polisher

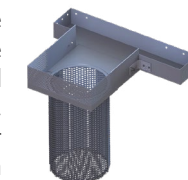
The Water Polisher™ is an advanced stormwater treatment system utilizing an up flow media filter with built-in pretreatment. This patented design provides double-chambered separation to remove large to fine sediments and prevent clogging challenges found in downward flow media filters.



### TRASH CAPTURE PRODUCTS

#### Catch Basin Inlet Filters

The Catch Basin Inlet Filters are insertable systems designed to capture fine to coarse sediments, floatable trash, debris, total suspended solids (TSS), nutrients, metals, and hydrocarbons conveyed in stormwater runoff. The filter system is available in four different model types: Full Capture Type, Multi-Level Screen Type, Kraken Filter Type, and the Media Filter Type. - **Meeting California's Full Trash Capture requirements (5mm).**



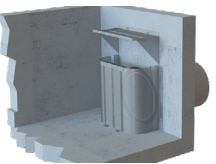
#### Bio Clean ARS

The Bio Clean ARS™ (Automatic Retractable Screen) is the industry's most unique and dependable automatic retractable screen system, designed to block trash and debris from entering storm drains during dry weather flows and light to moderate rain. The Bio Clean ARS blades move independently blocking trash and allowing water to move freely underneath. The Bio Clean ARS can also be adjusted for more restrictive flow or a looser tolerance for increased water capacity, and individually changed for easy maintenance.



#### Bio Clean CPS

The Bio Clean CPS™ (Connector Pipe Screen) technology can be retrofitted into any curb or drop inlet to help municipalities meet stormwater regulations and comply with their National Pollutant Discharge Elimination System (NPDES) or municipal separate storm sewer system (MS4) permit. Bio Clean CPS devices can be used for new site developments as the first line of defense to prevent trash and debris from reaching downstream stormwater systems, where they can cause clogging and unnecessary maintenance burdens. The Bio Clean CPS captures 100% of trash and debris 5mm and greater.



#### Curb Guard

Curb Guard is the first line of defense for inlets against debris and litter. The Curb Guard is made of 100% stainless steel and it has a unique recessed design, setting the screen back a few inches for better flow. The flat mounting bracket makes it tire-safe and ideal for street sweeping operations. The Curb Guard provides 100% coverage of the basin, has a fixed bypass for high flows, and it will assist your city or county with trash TMDL compliance. Available in any size.



### SPECIALTY FILTER PRODUCTS

#### Downspout Filter

The Downspout Filter is the industry's leading solution for treatment of roof runoff. This is used to treat commercial and industrial rooftops along with high-rise buildings, parking structures, and residential buildings. Available in 3 sizes, this filter can easily adapt to downspouts 2" to 12" in diameter. The filter comes standard with rubber boots that allow for easy installation to the downspout. **Approved by the IAPMO**, this filter can meet all your roof runoff needs.







398 Via El Centro

Oceanside, CA 92058

855.566.3938

[stormwater@forterrabp.com](mailto:stormwater@forterrabp.com)

[biocleanenvironmental.com](http://biocleanenvironmental.com)