

**PRESTO**



**GEOPAVE®**

Gravel Porous Pavement

Design  
Resource  
Package



**GRAVEL PAVERS**





**PRESTO**



**GEOSYSTEMS®**

## Design Resources

### TABLE OF CONTENTS

[Learn About GEOPAVE® Pavers](#)

[Green Building Credits](#)

[Environmental Aspects Green Sheet](#)

[Watch a Stormwater Webcast](#)

[Create a Specification](#)

[Interactive Porous Pavement Design](#)

[Assistant Tool](#)

[Compare Product & Performance](#)

[CAD Details for your Plans](#)

[Watch Videos](#)

[Evaluate Design & Construction Data](#)

[See Applications](#)

[Get a Material Estimate](#)



# GEOPAVE®

Gravel Porous Pavements

## **DESIGN HIGHLY-PERMEABLE, SUSTAINABLE GRAVEL PAVEMENTS**

Design structural pavements to resist rigorous traffic loading & stresses. Meet stormwater goals & green infrastructure initiatives for infiltrating water at its source to reduce runoff. Mitigate flooding potential with on-site stormwater storage to capture & return water to the natural aquifer.

**This design package will equip you  
with tools & resources to design  
sustainable porous pavements.**

# Learn About GEOPAVE Pavers

## See how the System Works

Learn how the GEOPAVE Porous Pavements work—and how it can work for your project.

- [Overview Brochure](#)
- [Visit our Photo Gallery](#)
- [See Project Case Studies](#)



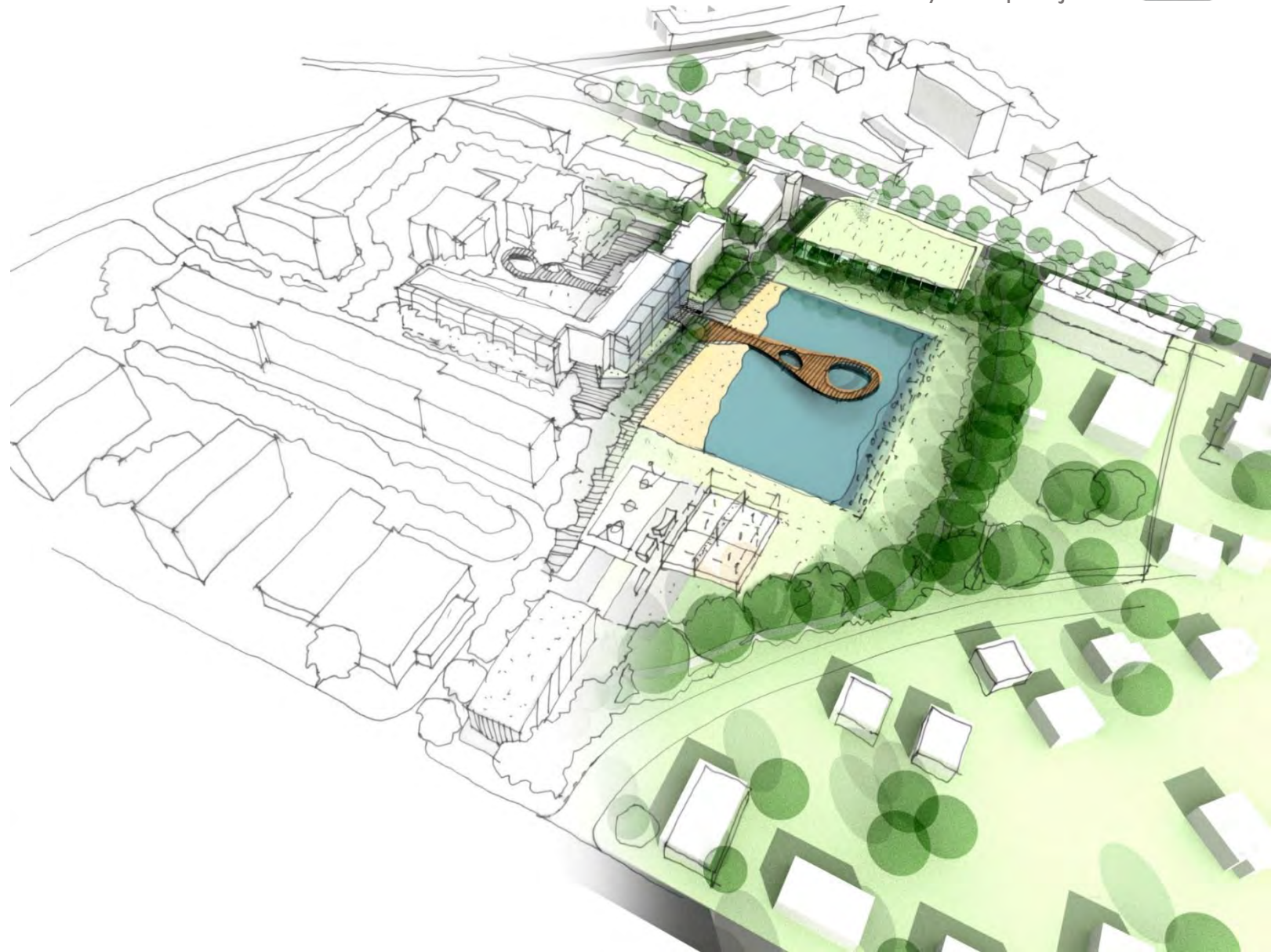


## Green Building Credits

GEOPAVE pavements can contribute to green building initiatives:

- Building with a minimal footprint & reducing site disruption
- Reducing impervious cover, promoting infiltration & capturing runoff
- Reducing the heat island effect
- Using materials with recycled content

Learn About Green  
Building Credits >>



**PRESTO**



Design Resources  
for your project 



GEOPAVE® gravel porous  
pavement projects offer  
lower environmental impact  
than alternative solutions.

# Environmental Benefits

[Download the Green Sheet >>](#)



**Energy Use**



**Resource Savings**



**Land Use**




**Water Benefit**

View recorded webcast and earn PDH credits.

# WEBCAST

Reduce Stormwater Infrastructure with  
GEOPAVE Porous Pavers>>



## Stormwater & Environmental Benefits

- Reduce Runoff
- Reduce Size/ Need for On-Site Stormwater Infrastructure or Ponds
- Stormwater Storage
- Improve Stormwater Quality
- Recycled Material Content
- Cooler Surface



# Create a Specification

## Fast & Easy Specification Tools

Create your own custom specification or use industry-standard specifications from [ARCAT.com](https://www.arcat.com) and [CADDdetails.com](https://www.caddetails.com)

SPECMaker® Tool:

[Create a Custom CSI Spec in Minutes](#)

[CSI Specification \(Word doc\)](#)

[Specification Summary](#)

## Industry Specifications

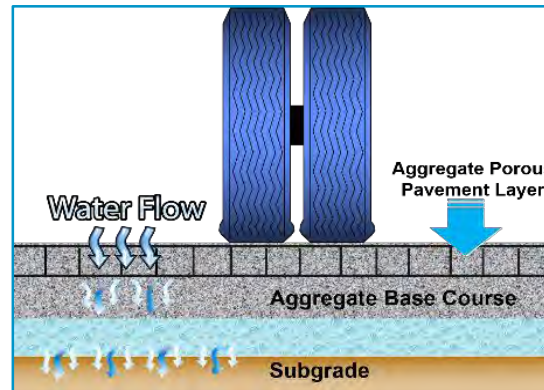
[ARCAT](https://www.arcat.com) | [CADDetails](https://www.caddetails.com)



# Evaluate Pavement Scenarios

## Interactive Porous Pavement Design Assistant

Evaluate best pavement options for site conditions and expected use. Plan stormwater storage and create quick cross-section details for your project.



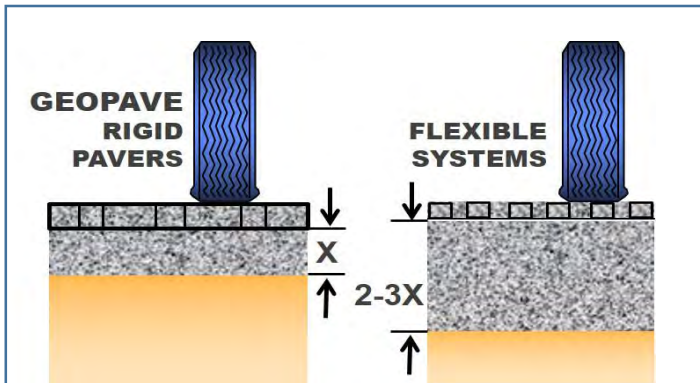
Download Interactive  
Porous Pavement Tool >>





## Compare Product & Performance Attributes

Comparing GeoPave rigid pavers to flexible pavers & rolled systems is like comparing apples to oranges. See the differentiating attributes that make GeoPave rigid pavements the highest performer with loading and traffic stresses.



## COMPARE Rigid to Flexible Paver Systems >>



**PRESTO**



Design Resources  
for your project 

# CAD Detail Drawings

## Cross-Section Drawings

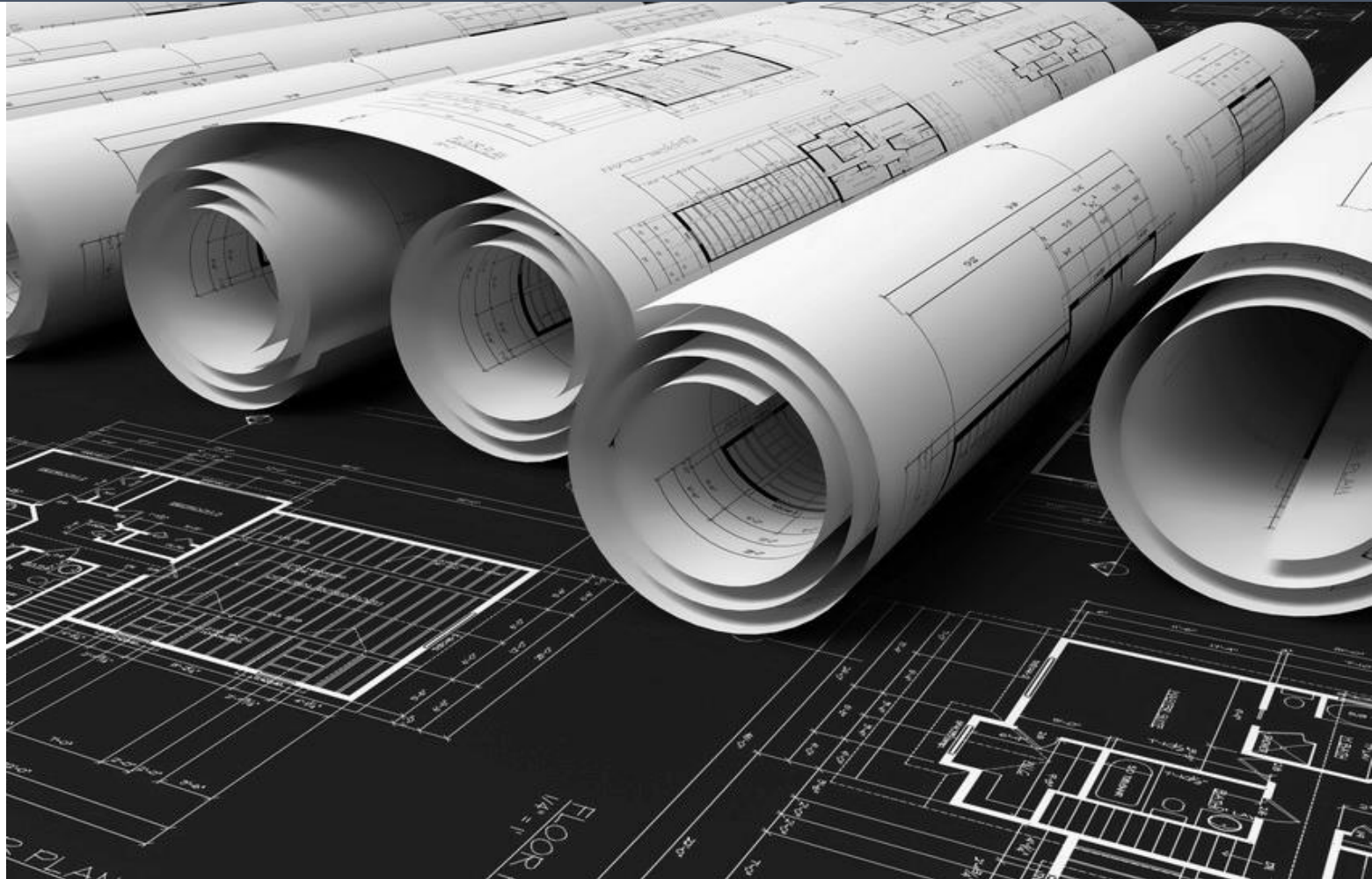
Find all the drawing details you need to include in your contract documents.

[CAD Drawings](#)

## Industry Formatted CAD Details

[ARCAI](#)

[CADDetails](#)





**PRESTO**



Design Resources  
for your project 

# Watch Videos

See Product in Action



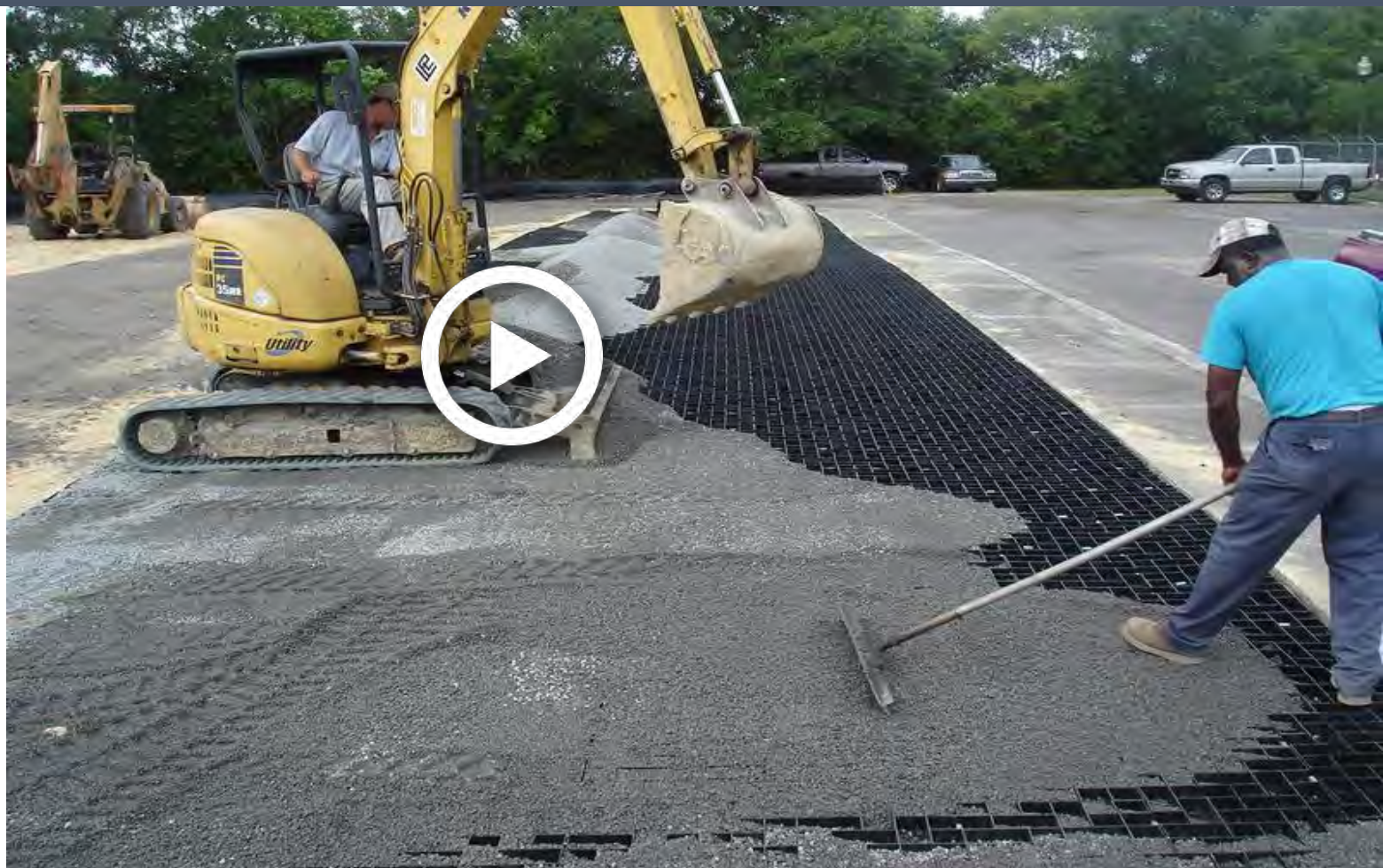
[Visit our Video Gallery >>](#)

[Watch Cross-Section Animation >>](#)

Project Installations

[Permeable Parking at The Citadel >>](#)

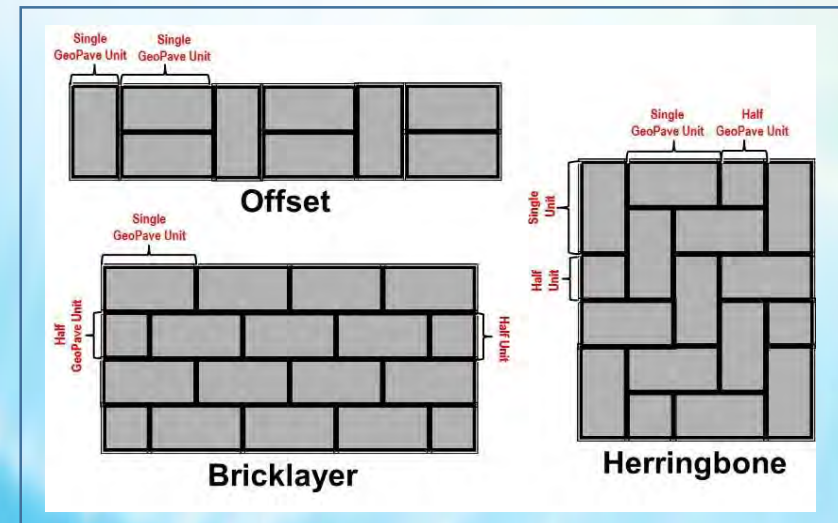
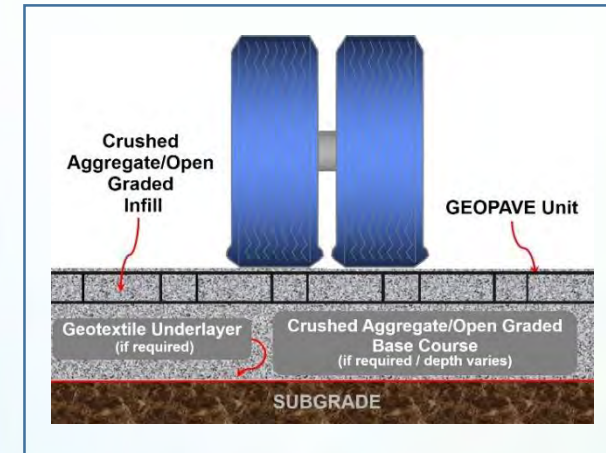
[Parking & Walkways at The Ridges Sanctuary >>](#)



## Evaluate How GeoPave Porous Pavements Work

Learn about the technical details, design considerations and methods important to designing and constructing GEOPAVE porous pavements.

Read Design & Construction Guide >>





# Porous Pavement Applications

Learn how the GEOPAVE® Porous Pavement System's versatility in a wide range of applications will benefit your project's pavement performance, environmental goals and stormwater management initiatives.





**PRESTO**



## Urban Runoff Control

### Fire & Utility Access

- Design stable gravel emergency and maintenance access lanes for cars and trucks (to H-20 loading) to resist heavy loading stresses.
- Use open-graded aggregate base and infill for fast infiltration and stormwater runoff reduction.

[LEARN MORE](#)





**PRESTO**



## Green Infrastructure Design

### Roadway & Parking

- Design GEOPAVE gravel roadways & parking areas to meet city/state stormwater requirements for pervious surfaces & capture runoff from adjacent hard pavements.
- Incorporate for Green Infrastructure (GI) and Low Impact Development (LID) projects.



[LEARN MORE](#)





**PRESTO**



## Wetlands Protection

### Parking Stalls

- Design permeable parking stalls to infiltrate water at the point of contact—keeping runoff out of nearby protected wetlands, sensitive areas & waterways.
- Meet pervious pavement regulations with a percentage of parking area designated as permeable.



LEARN MORE





**PRESTO**



## Stormwater Management

### Parking Lots

#### On-site Stormwater Storage

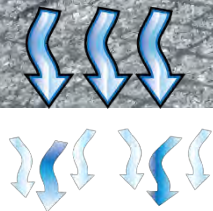
- Design parking areas with open-graded aggregate for fast infiltration and runoff reduction.
- The pavement layer acts like a stormwater retention 'basin' storing water on-site for natural infiltration.
- Reduce and eliminate stormwater ponds and infrastructure.



LEARN MORE



Water Flow





**PRESTO**



## Pavement Integration

### Integration with Asphalt Pavements

- Design GEOPAVE porous pavements to accept the sheetflow runoff from adjacent impervious pavements (asphalt).
- The paver units may be installed/cut to integrate seamlessly with the hard pavement.

[LEARN MORE](#)





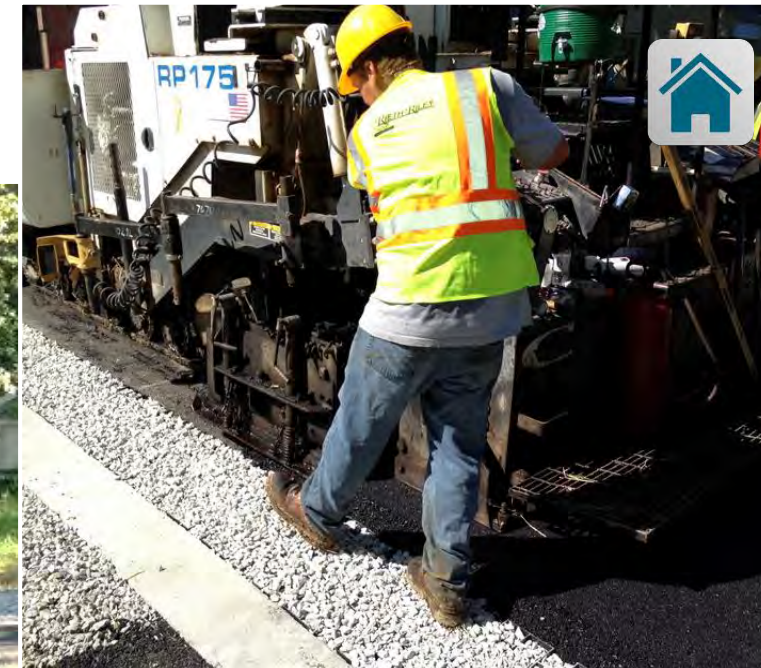
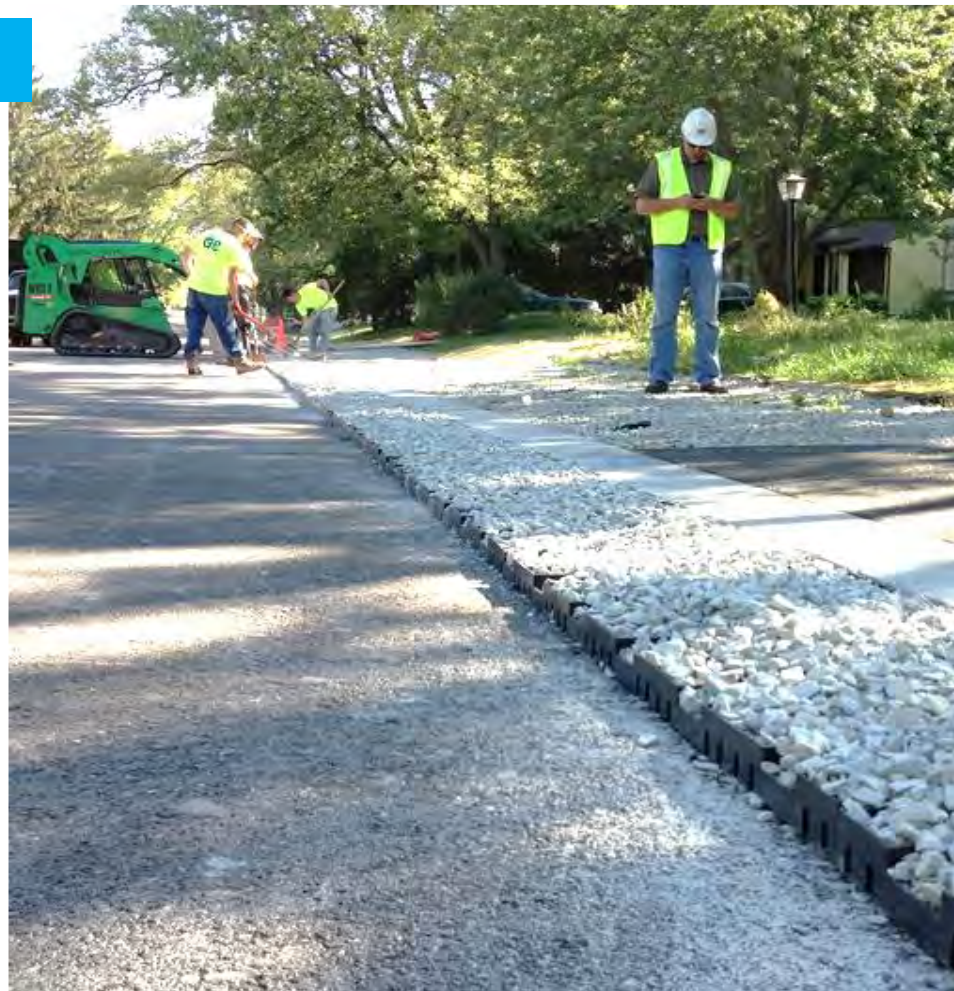
**PRESTO**



## Edge & Runoff Control

### Road Shoulders

- Design permeable, load-supporting road shoulders for edge control on soft shoulders and to allow natural stormwater infiltration.
- Integrate with hard surface paving (eg asphalt).



LEARN MORE



**PRESTO**



Low Environmental Impact

## Multi-Use Trails

- Design pedestrian, bicycle, equestrian and ATV trails to protect the trail's surface integrity under loading and from erosive forces.



LEARN MORE 





**PRESTO**



## Use of Local Resources

### Pedestrian Trails & Walkways

- Design low environmental impact trails and walkways with local aggregate resources.
- Open-graded aggregate infill is suitable for barrier-free access.



LEARN MORE 





**PRESTO**



## Control Runoff into Waterways

### Shoreline Access Ways

- Design walkways and drive access ways for low environmental impact to fresh water sources and protected areas.
- Use local and decorative stone for landscape blending and delineation.



[LEARN MORE](#)







Your Project is Important. See How We Can Help.



## Certainty:

*/ˈsɜrtntē/*

The quality that a successful outcome is inevitable.

Take the tour to find out how "The Presto Advantage" assures results for your project.



# The Presto Advantage

# Customized Technical Presentations

Learn more about how the  
GEOPAVE® Porous Pavement  
System can work on your  
upcoming projects.

Learn & Earn PDH  
Credits.

[SCHEDULE a Lunch & Learn Presentation >>](#)





# Local Support Get an Estimate

Our global network of distributors and representatives will work with you to provide a price estimate.

[Find Local Distributor/Rep >>](#)







**PRESTO**


**GEOSYSTEMS®**

**GEOPAVE®**

Porous Pavement System

## Design with Certainty.

Get answers to your questions and help with your design. Our solution will be tailored for your unique project and site challenges. You can rely on our experience, tools & resources to help you create a quality design package



**Certainty and Peace of Mind—  
from project start to finish.**

**Contact Us 1-800-548-3424 | [www.prestogeo.com](http://www.prestogeo.com)**